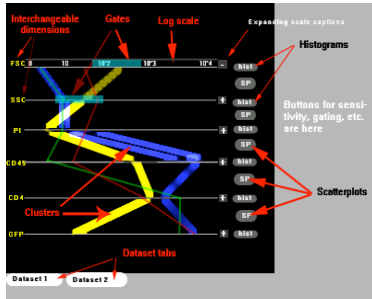
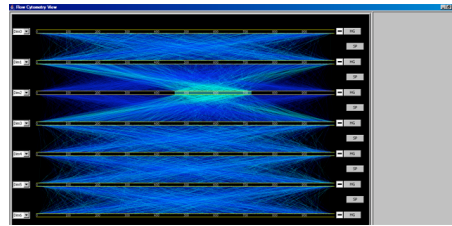


Interface for FCM Data Analysis



17

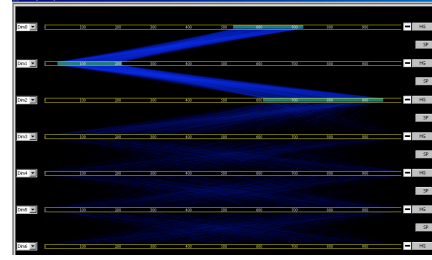
Prototype progress



Highlighting of the gate. Random set, 3000 points, 7 dimensions.

18

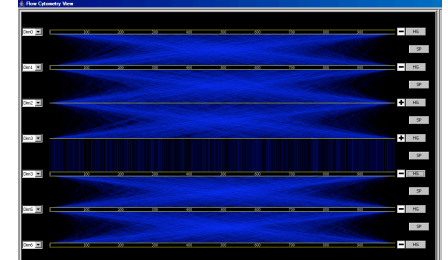
Prototype progress



Filtering. Random set, 100 000 points, 7 dimensions. Full scale rendering takes ~1min.

19

Prototype progress



Interaction results. Random set, 3000 points, 7 dimensions.

20

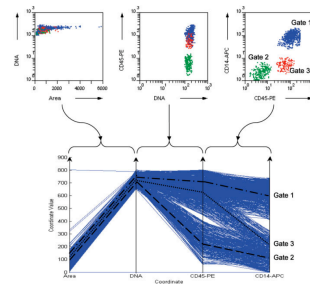
Future Work

- Visualization of the real data
- Clustering
- Optimization
- User evaluation

21

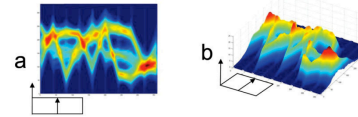
3D Parallel Coordinate System for FCM

Marc Streit et al. (2006)



22

3D Parallel Coordinate System for FCM



- Does not provide any new information about dataset
- Introduces visual occlusions
- Have to rotate to see all data
- Unavailable

Picture from Marc Streit et al. (2006)

23

Questions...

24